



# Greater Cleveland Regional Transit Authority Ridership Report – February 2023

## Summary

- Ridership continued to recover from the COVID-19 pandemic and resulting shutdowns
- System ridership in February 2023 was 1.7 million, representing 27% more riders than in February 2022
  - Average fixed route weekday was 27% higher<sup>1</sup>
  - Average fixed route Saturday was 28% higher<sup>1</sup>
  - Average fixed route Sunday was 26% higher<sup>1</sup>



### Bus (MB)

Bus ridership in February 2023 was 32% higher than in February 2022

- Average weekday was 32% higher<sup>1</sup>
- Average Saturday was 30% higher<sup>1</sup>
- Average Sunday was 34% higher<sup>1</sup>



### Red Line (HR)

Red Line ridership in February 2023 was 11% higher than in February 2022

- Average weekday was 9% higher<sup>1</sup>
- Average Saturday was 28% higher<sup>1</sup>
- Average Sunday was 12% higher<sup>1</sup>



### Light Rail (LR)

Light Rail ridership in February 2023 was 35% higher than in February 2022

- Average weekday was 32% higher<sup>1</sup>
- Average Saturday was 47% higher<sup>1</sup>
- Average Sunday was 28% higher<sup>1</sup>



### HealthLine (RB)

HealthLine ridership in February 2023 was 17% higher than in February 2022

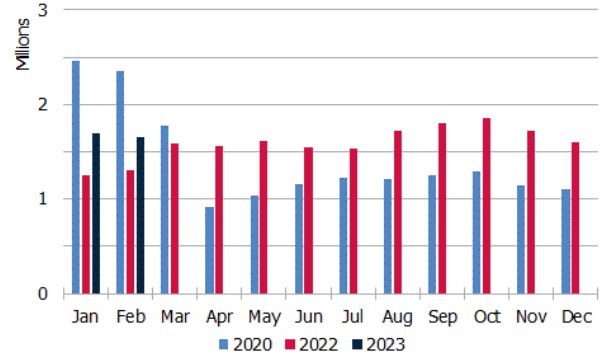
- Average weekday was 20% higher<sup>1</sup>
- Average Saturday was 4% higher<sup>1</sup>
- Average Sunday was 4% higher<sup>1</sup>



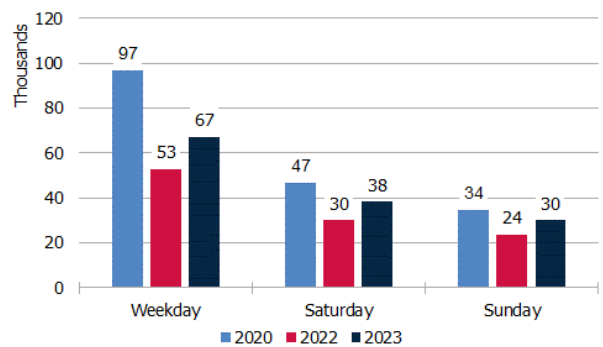
### Paratransit (DR)

Paratransit ridership in February 2023 was 30% higher than in February 2022

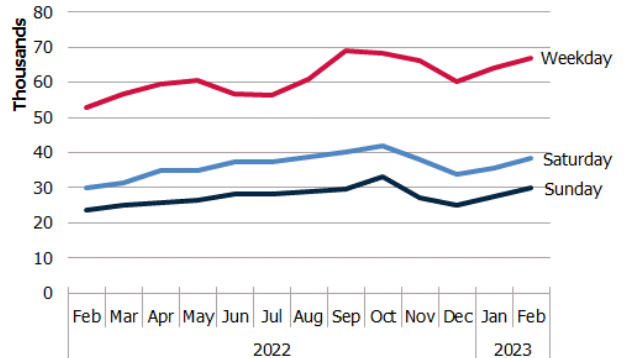
System Ridership by Month



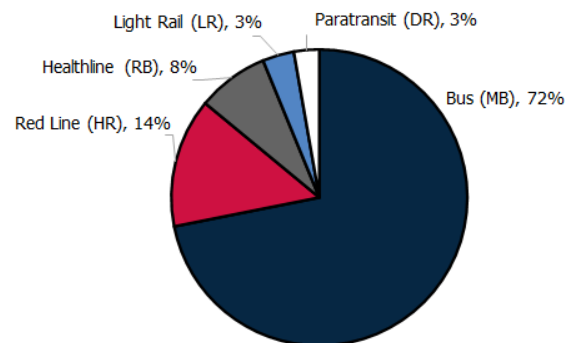
February Avg. Ridership by Day Type (no Paratransit)



Avg. Ridership by Day Type (no Paratransit)



February 2023 System Ridership by Mode



<sup>1</sup> Average ridership by day type does not include atypical days as defined by the FTA for NTD ridership reporting