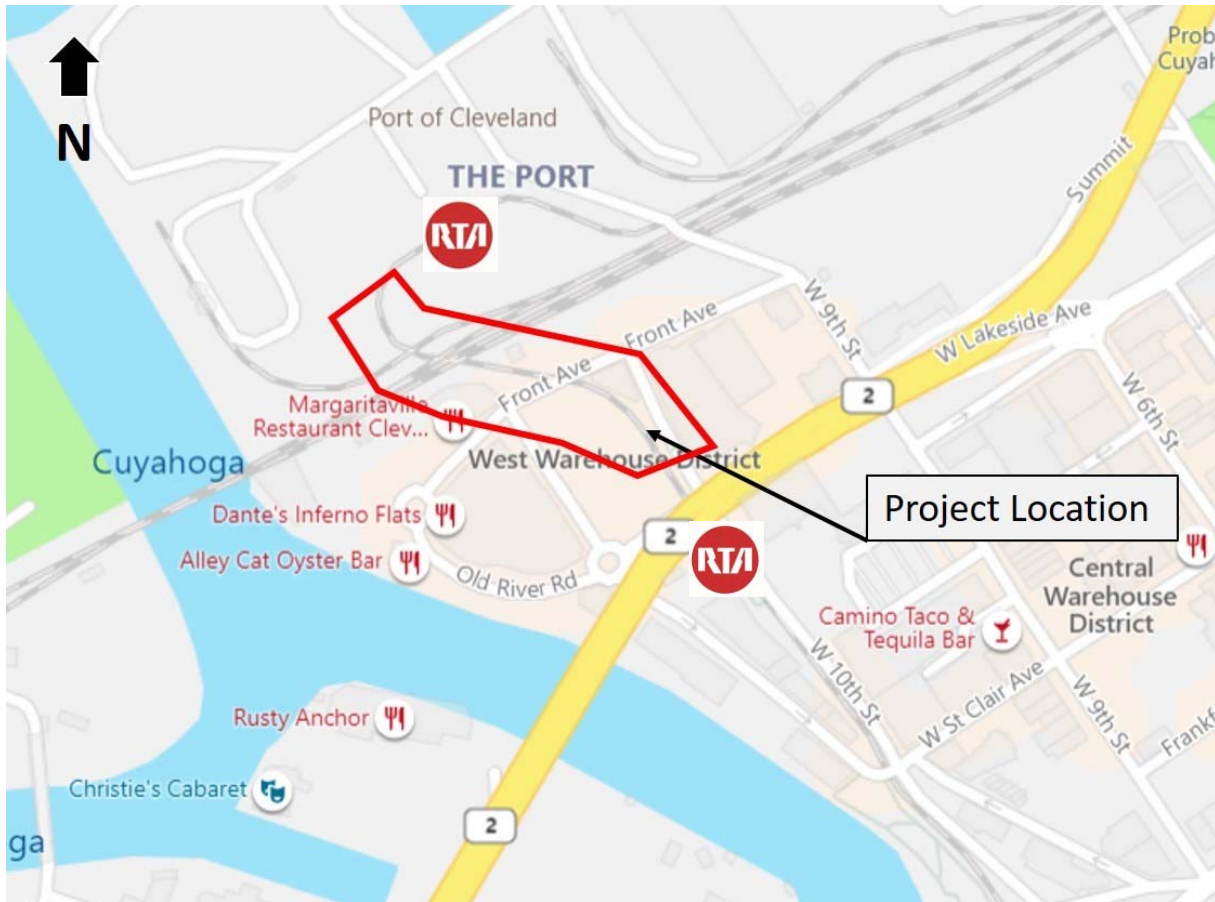




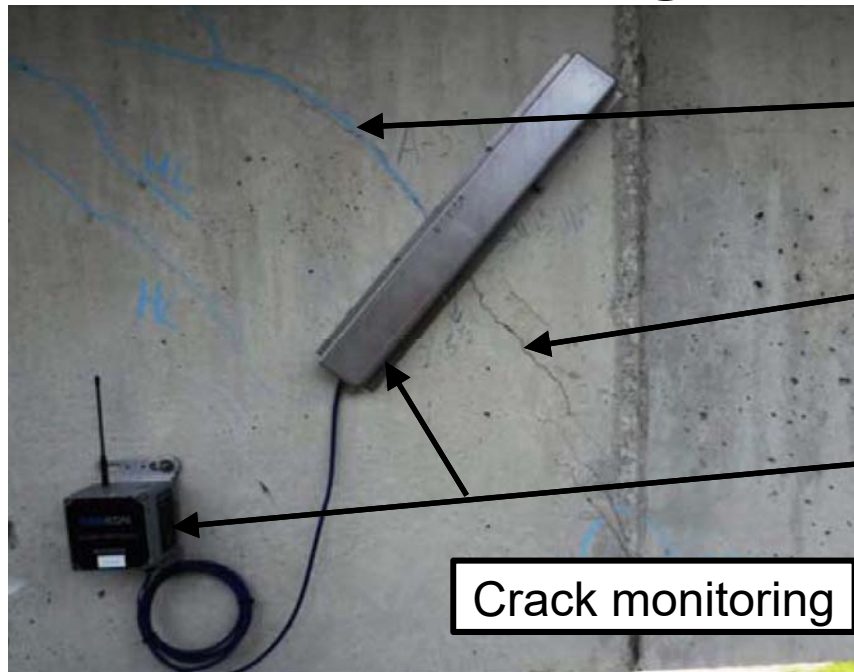
Ratification of a Change Order for the Emergency Shoring for the Waterfront Line Bridge

Presented to: Operational Planning &
Infrastructure Committee

September 14, 2021



Emergency Shoring of the Waterfront Line Bridge



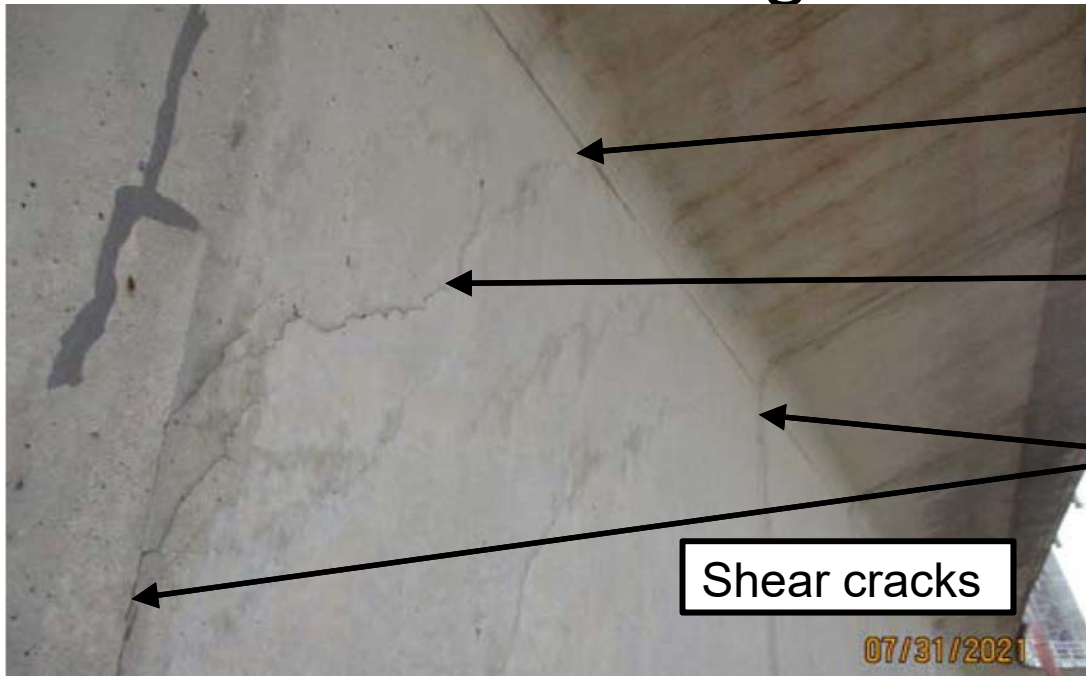
Newer cracks found

Older cracks documented

Remote monitoring device

Crack monitoring

Emergency Shoring of the Waterfront Line Bridge

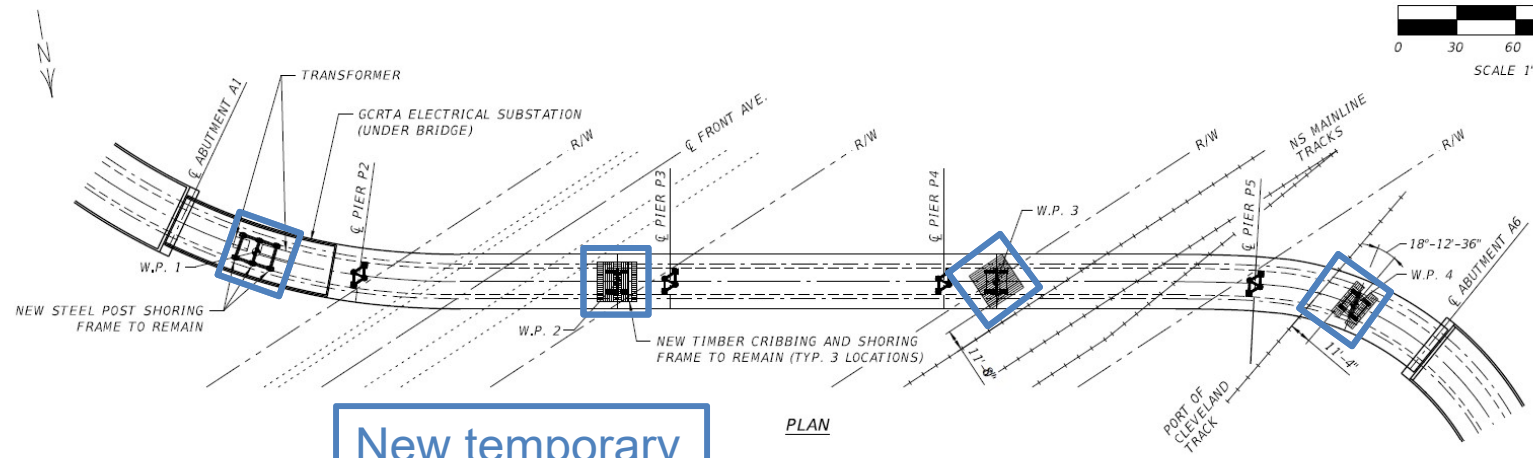
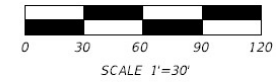


Increased crack length

Approximate crack location Fall 2020

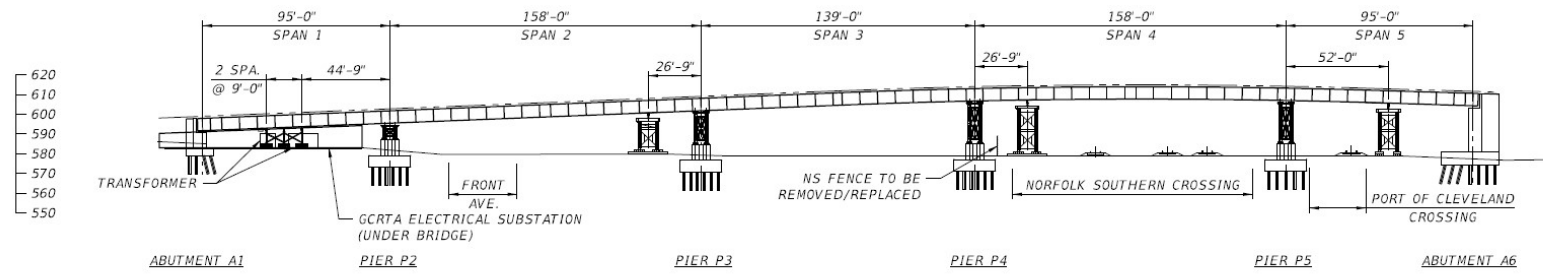
Segment joints

Shear cracks



New temporary shoring towers

PLAN



ELEVATION



Emergency Shoring of the Waterfront Line Bridge



Relative size

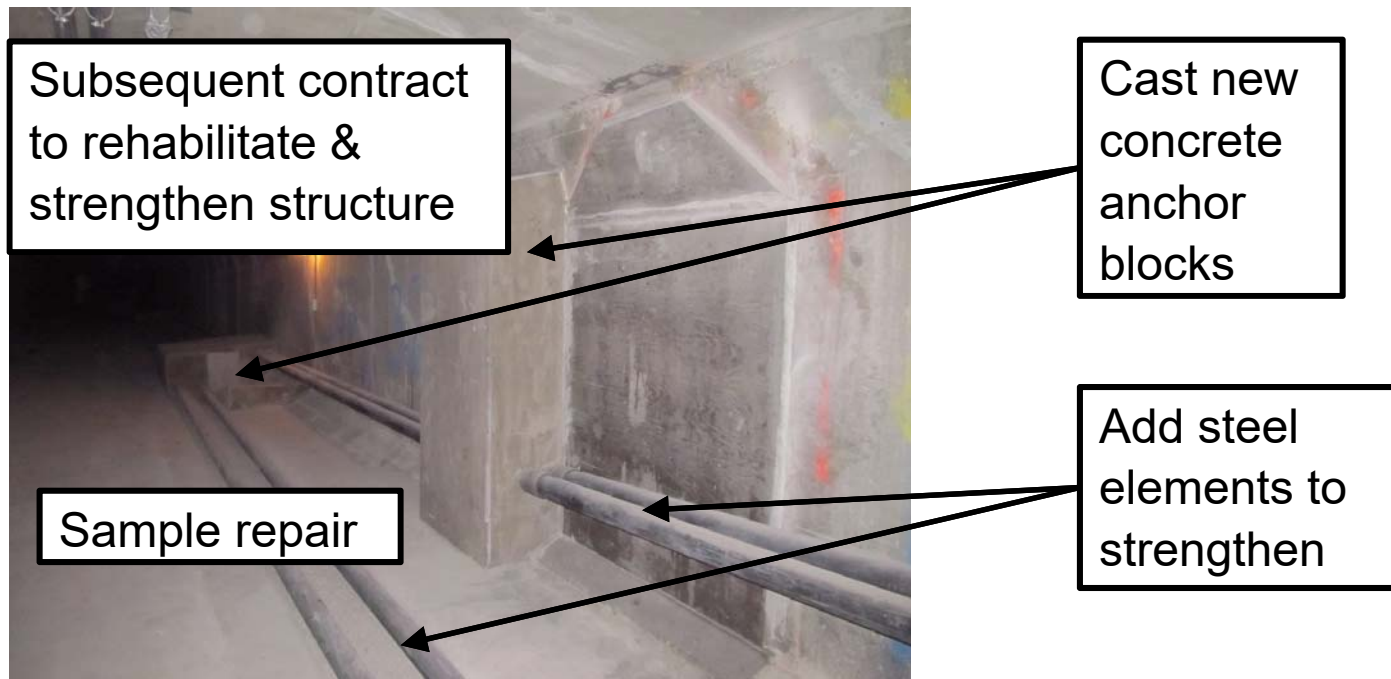
Shoring example

Bridge members to be supported

Temporary steel jacking frame

Temporary steel shoring towers

Emergency Shoring of the Waterfront Line Bridge



Emergency Shoring of the Waterfront Line Bridge

Section 306.43 (H)(1)(a) states that competitive procedures are not required when a real and present emergency exists affecting safety, welfare, or the ability to deliver transportation services.

Emergency Shoring of the Waterfront Line Bridge

GCRTA Procurement Manual contains procedures for emergency procurements. In accordance with those procedures, the need for the emergency work was presented to the President of the Board of Trustees. Approval was given to proceed with the emergency change order to Contract No. 2020-163 with The Ruhlin Company, pending ratification by the Board of Trustees.

Emergency Shoring of the Waterfront Line Bridge

Staff requests that the Board of Trustees ratify Change Order No. 6 to Contract No. 2020-163 with The Ruhlin Company for Emergency Shoring of the Waterfront Line Bridge in an estimated amount of \$717,100.00.

Emergency Shoring of the Waterfront Line Bridge

Questions?