

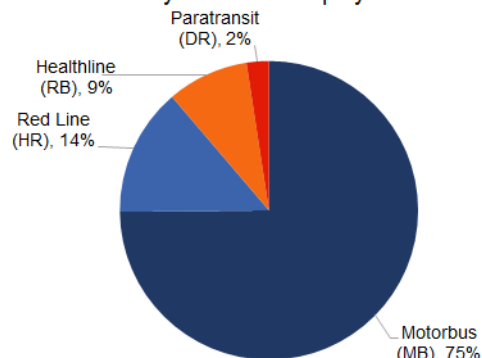


# Greater Cleveland Regional Transit Authority Ridership Report – September 2021

## Summary

- The COVID-19 pandemic continued to affect ridership
- System ridership in September 2021 was 1.5 million, representing 25% more riders than in September 2020
  - Average fixed route weekday was 22% higher<sup>1</sup>
  - Average fixed route Saturday was 7% higher<sup>1</sup>
  - Average fixed route Sunday was 21% higher<sup>1</sup>

September 2021 System Ridership by Mode

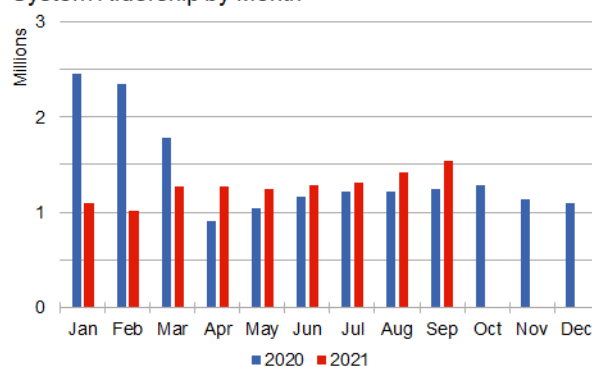


### Motorbus (MB)

Motorbus ridership in September 2021 was 33% higher than in September 2020

- Average weekday was 30% higher<sup>1</sup>
- Average Saturday was 13% higher<sup>1</sup>
- Average Sunday was 20% lower<sup>1</sup>

System Ridership by Month

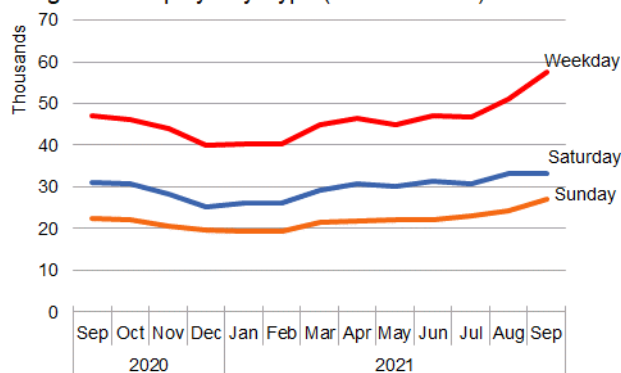


### Red Line (HR)

Red Line ridership in September 2021 was 20% higher than in September 2020

- Average weekday was 13% higher<sup>1</sup>
- Average Saturday was 7% higher<sup>1</sup>
- Average Sunday was 45% higher<sup>1</sup>

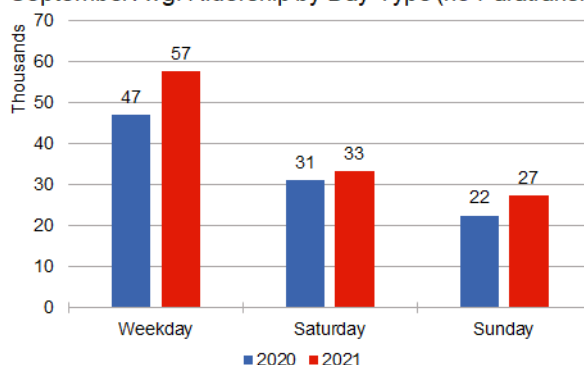
Avg. Ridership by Day Type (no Paratransit)



### Light Rail (LR)

Blue and Green Line services were shut down for maintenance on August 8<sup>th</sup>, 2021 and did not resume until October. Year-over-year comparisons between September 2020 and September 2021 light rail ridership counts are affected by this service irregularity

September Avg. Ridership by Day Type (no Paratransit)



### HealthLine (RB)

HealthLine ridership in September 2021 was 20% higher than in September 2020

- Average weekday was 16% higher<sup>1</sup>
- Average Saturday was 8% higher<sup>1</sup>
- Average Sunday was 25% higher<sup>1</sup>



### Paratransit (DR)

Paratransit ridership in August 2021 was 31% higher than in August 2020

<sup>1</sup> Average ridership by day type does not include atypical days as defined by the FTA for NTD ridership reporting