



Greater Cleveland Regional Transit Authority Ridership Report – April 2022

Summary

- The COVID-19 pandemic continued to affect ridership
- System ridership in April 2022 was 1.6 million, representing 23% more riders than in April 2021
 - Average fixed route weekday was 28% higher¹
 - Average fixed route Saturday was 13% higher
 - Average fixed route Sunday was 19% higher¹
- Due to extra service operated for the Guardians home opener, Friday, April 15, 2022 fit the FTA definition of an “atypical service day”. That day’s ridership is excluded from average day-type comparisons, but is included in total ridership.



Bus (MB)

Bus ridership in April 2022 was 26% higher than in April 2021

- Average weekday was 31% higher¹
- Average Saturday was 12% higher¹
- Average Sunday was 20% higher¹



Red Line (HR)

Red Line ridership in April 2022 was 24% higher than in April 2021

- Average weekday was 24% higher¹
- Average Saturday was 23% higher¹
- Average Sunday was 24% higher¹



Light Rail (LR)

Light Rail ridership in April 2022 was 18% higher than in April 2021

- Average weekday was 20% higher¹
- Average Saturday was 10% higher¹
- Average Sunday was 20% higher¹



HealthLine (RB)

HealthLine ridership in April 2022 was 6% higher than in April 2021

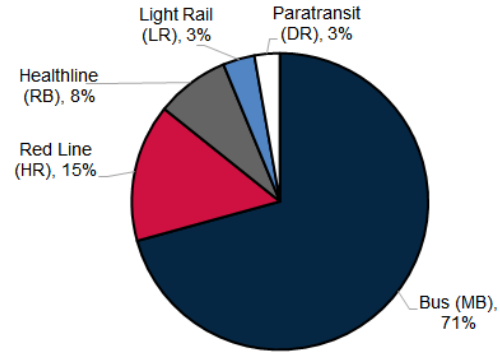
- Average weekday was 9% higher¹
- Average Saturday was <1% lower¹
- Average Sunday was 2% higher¹



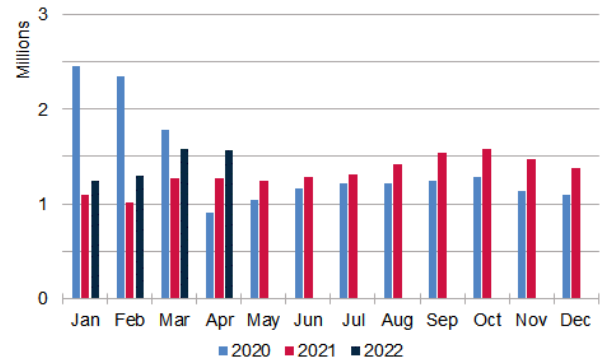
Paratransit (DR)

Paratransit ridership in April 2022 was 24% higher than in April 2021

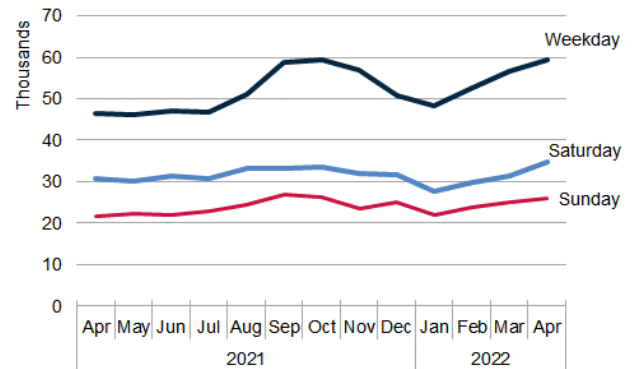
April 2022 System Ridership by Mode



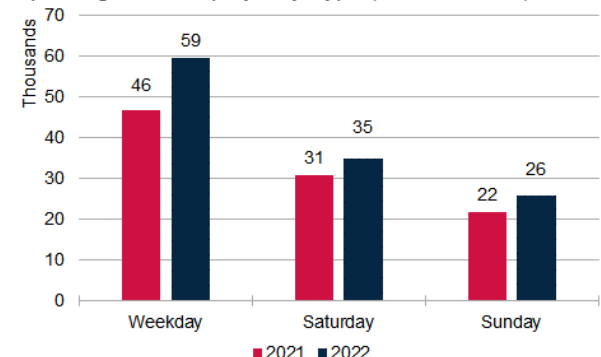
System Ridership by Month



Avg. Ridership by Day Type (no Paratransit)



April Avg. Ridership by Day Type (no Paratransit)



¹ Average ridership by day type does not include atypical days as defined by the FTA for NTD ridership reporting