



Design Service for Central Rail Service Building Mezzanine

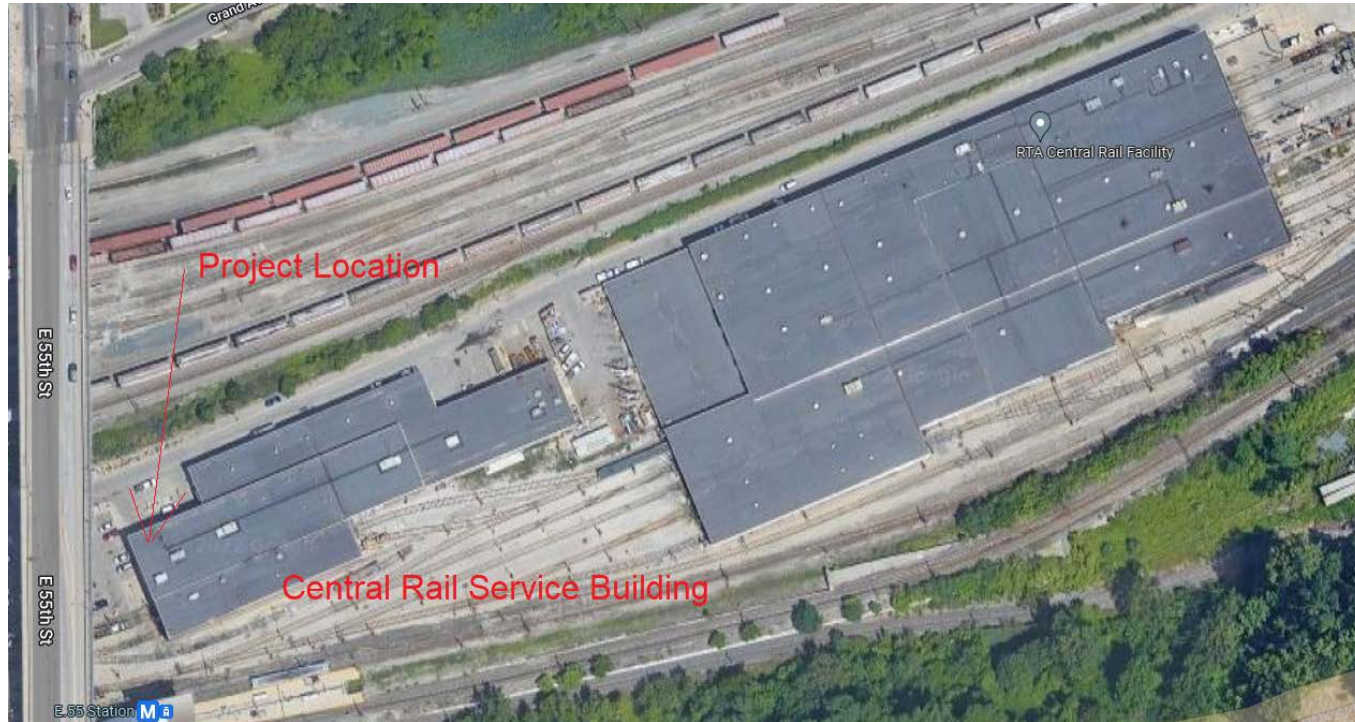
Operational Planning & Infrastructure
Committee

December 6, 2022

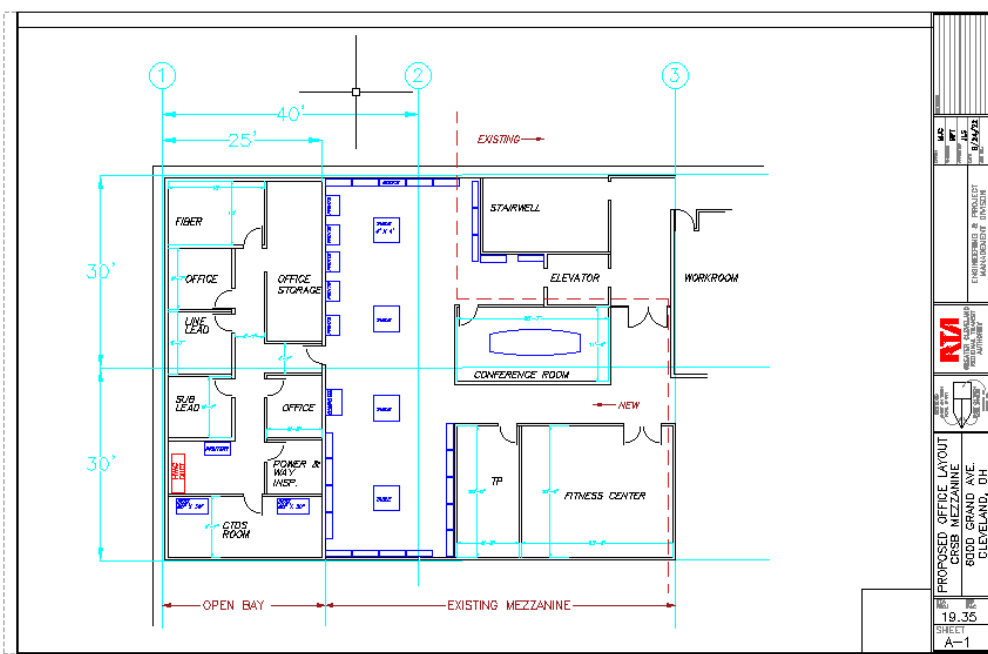
Design Service for Central Rail Service Building Mezzanine Project Overview

- The goal of this project is to obtain Engineering Services to design a mezzanine expansion at the Central Rail Service Building to provide more offices.
- Rail Management developed a desired office layout.
- Consultant will verify compliance with all codes and provide Engineering to obtain a successful construction bid.

Project Location



Design Service for Central Rail Service Building Mezzanine Project Overview



Design Service for Central Rail Service Building Mezzanine Project Overview

- Consultant will:
 - Provide structural design for the mezzanine expansion and the roof reinforcement for air conditioning
 - Verify layout complies with all codes including adequate egress.
 - Provide mechanical design of ventilation and sprinkler coverage.
 - Provide electrical design for all power and lighting.

Design Service for Central Rail Service Building Mezzanine Project Overview

- Consultant will:
 - Prepare a cost estimate for construction budget.
 - Review contractor submittals and requests for information.
 - Attend project meetings.
 - Inspect work.
 - Provide as-built drawings.

Design Service for Central Rail Service Building Mezzanine Procurement Overview

- Request for Proposal (RFP) issued September 19, 2022
- Accessed on the GCRTA website by nineteen (19) interested parties
- One (1) firm submitted a proposal
- One (1) firm was interviewed

Design Service for Central Rail Service Building Mezzanine Procurement Overview

Evaluation Panel Members:

- Engineering and Project Development
- Service Management
- Power & Way – Management
- Project Support, Quality Assurance
- Office of Management and Budget
- Office of Business Development
- Procurement

Design Service for Central Rail Service Building Mezzanine Procurement Overview

Evaluation Criteria:

- Project Manager
- Assigned Staff
- Past Performance
- Project Approach
- Location of Majority of Work
- DBE Participation

Design Service for Central Rail Service Building Mezzanine Procurement Overview

Most technically qualified vendor:

- Richard L. Bowen & Associates, Inc., Cleveland, OH

A 19% DBE goal was assigned to this project and will be met by utilizing:

- Advanced Engineering Consultants, Ltd.

Design Service for Central Rail Service Building Mezzanine Procurement Overview

Firm Experience:

- Richard L. Bowen & Associates, Inc. has successfully completed projects for GCRTA, Portage Area Regional Transit Authority, Norfolk Southern, Stark Area Regional Transit Authority, and Laketran, among others.
- Richard L. Bowen & Associates, Inc.'s personnel are experienced and familiar with the GCRTA system as a consultant and in providing quality deliverables.

Design Service for Central Rail Service Building Mezzanine Procurement Overview

Staff Requests that the Operational Planning and Infrastructure Committee recommend award to Richard L. Bowen & Associates, Inc. for Design Services for the Central Rail Service Building Mezzanine. The contract is not to exceed \$129,154.58.

Design Service for Central Rail Service Building Mezzanine Procurement Overview

Questions?