

# GCRTA Transit Police Safety & Security Committee

May 13, 2014





# Transit Police Mission

---

- “... to provide a safe and orderly environment within the transit system.”





# Transit Police Authority/Jurisdiction

---

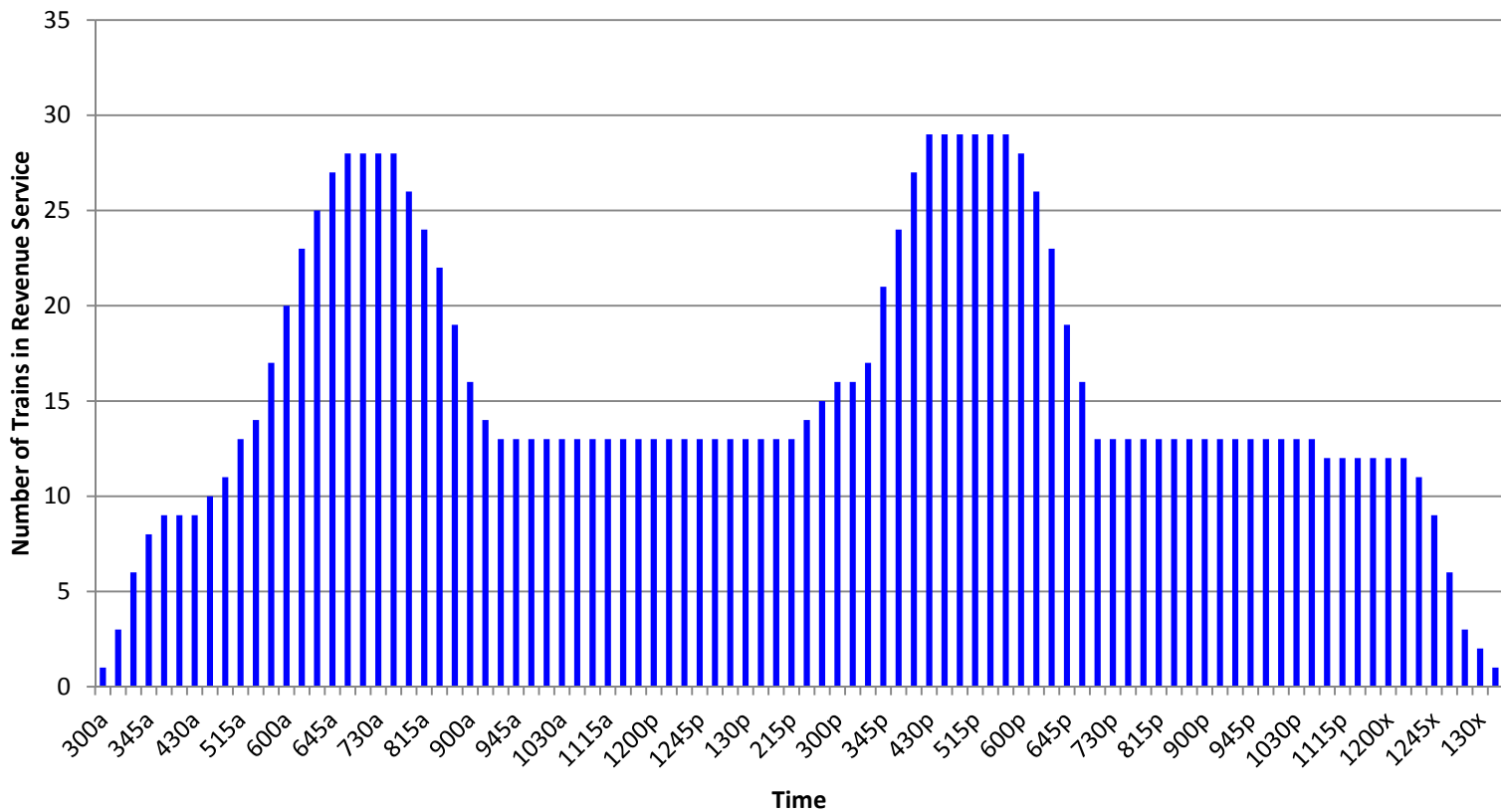
- Same authority as any Peace Officer in the State of Ohio
- Jurisdiction is on RTA property which includes:
  - Rail Right of Way & Platforms
  - Healthline Right of Way & Platforms
  - 11 Park-n-Ride & Transit Centers
  - RTA buses and trains
  - Areas of Joint Jurisdiction (Public Square)





# Revenue Trains - Weekday

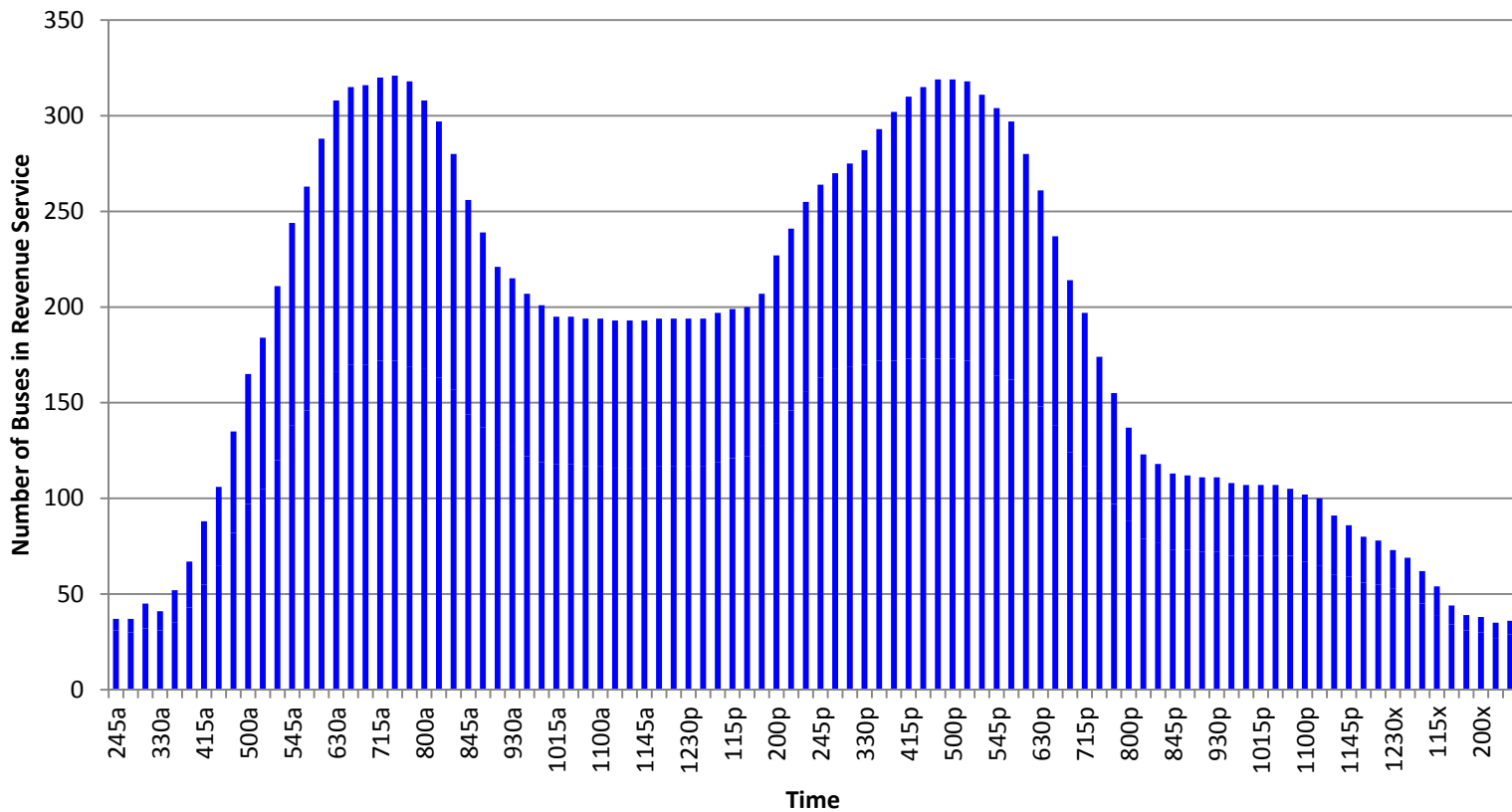
## Trains in Revenue Service (weekday)





# Revenue Coaches - Weekday

## Buses in Revenue Service (weekday)





# 2014 TP Annual Budget

---

- 13.09 million budget
- 108 Sworn State Certified Peace Officers, including 7 Explosive Detection K-9 Teams
- 30 Full-time Equivalent Fare Enforcement Officers
- 14 Civilians
  - 9 Dispatchers
  - 5 Other Security & Administrative Staffers





# Part 1 Crimes (thru April 30, 16 million customers)

## 4 Month Comparison

Part 1 (Serious Crimes)

For the Period of Jan 1 to Apr 30

	<u>2013</u>	<u>2014</u>
Homicide*	0	0
Rape*	0	0
Robbery*	110	69
Felonious Assault*	6	6
Assault	51	44
Burglary	0	1
Larceny/Theft	41	65
Auto Theft	3	6
Arson	0	0
<b><u>Total Offenses</u></b>	<b><u>211</u></b>	<b><u>191</u></b>



# Quality of Life Crimes

## 4 Month Comparison

Quality of Life Crimes

For the Period of Jan 1 to Apr 30

	<u>2013</u>	<u>2014</u>
Fare Evasion	1072	1366
Disorderly Conduct	50	80
Disorderly Conduct Intoxication	62	71
Open Container	116	76
Trespassing	25	19
<u>Total Offenses</u>	<u>1325</u>	<u>1612</u>





# Areas of Focus – Over the Past Year

---

- Electronic Devices
- Operator Assaults



Home

Sections ▾

Traffic ▾

Weather ▾

## Cell phone thefts on the decline in Cleveland



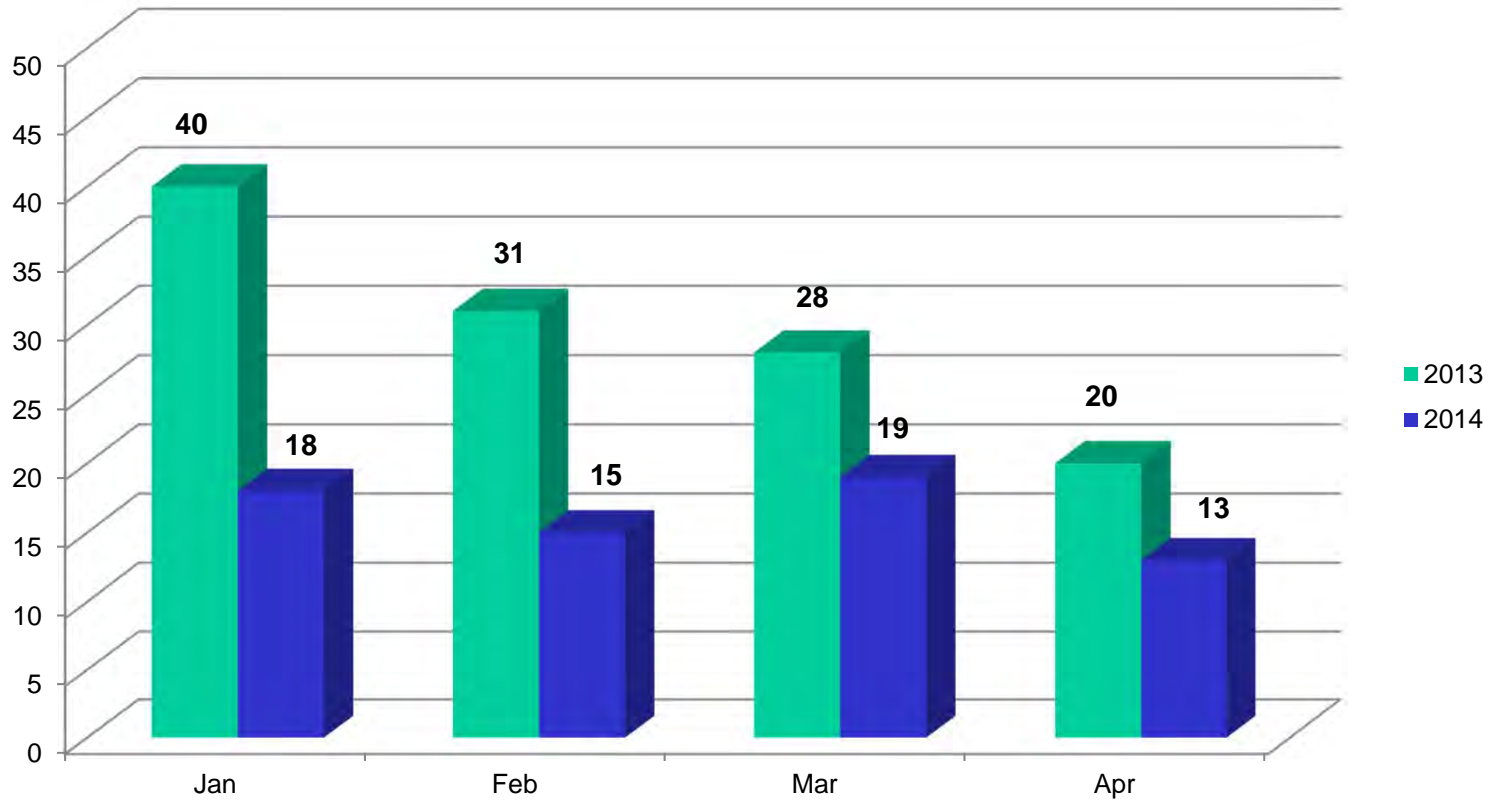
BY: [Cassandra Nist](#)

POSTED: 12:16 PM, Apr 28, 2014



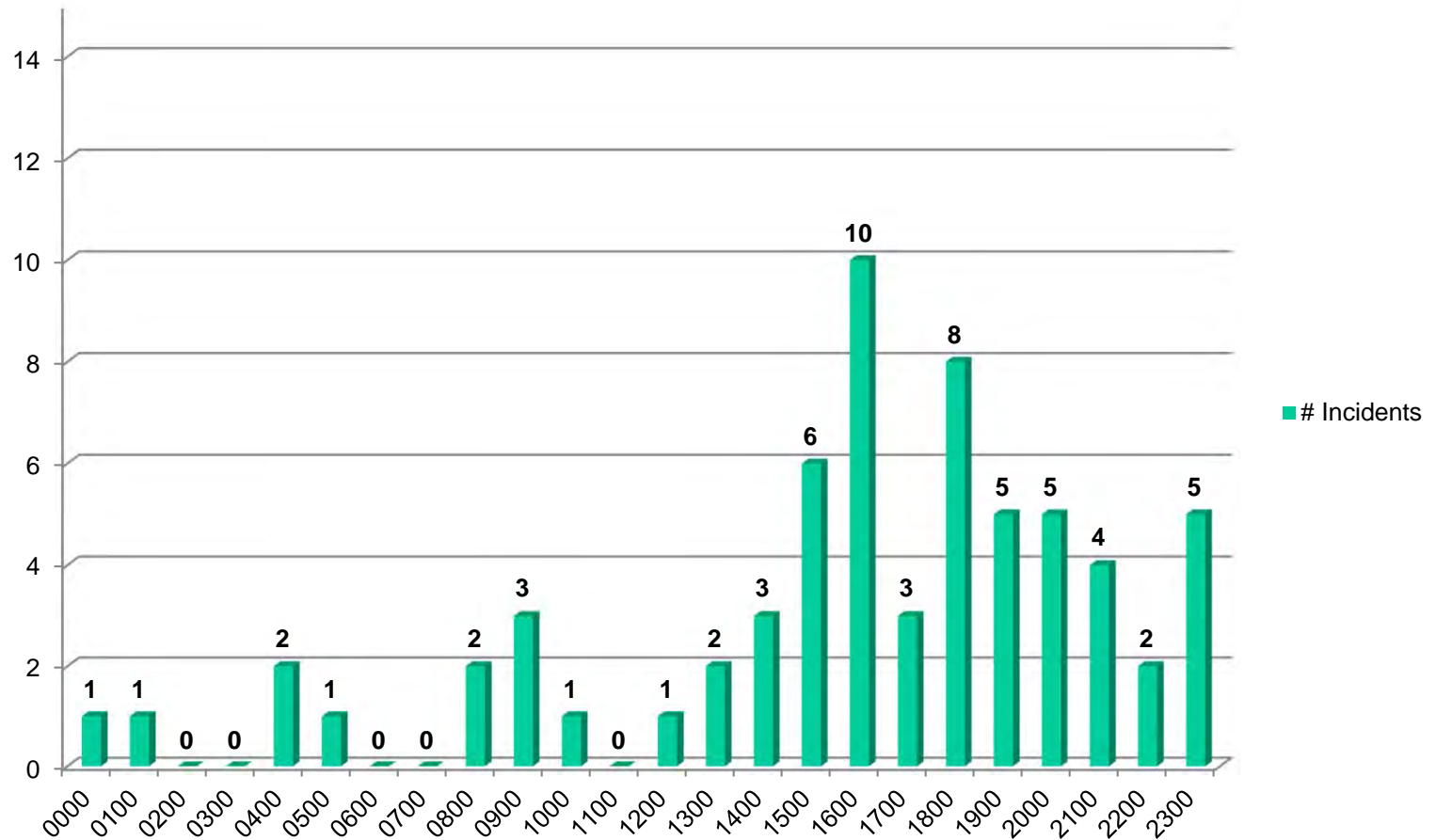


# Electronic Devices by Month



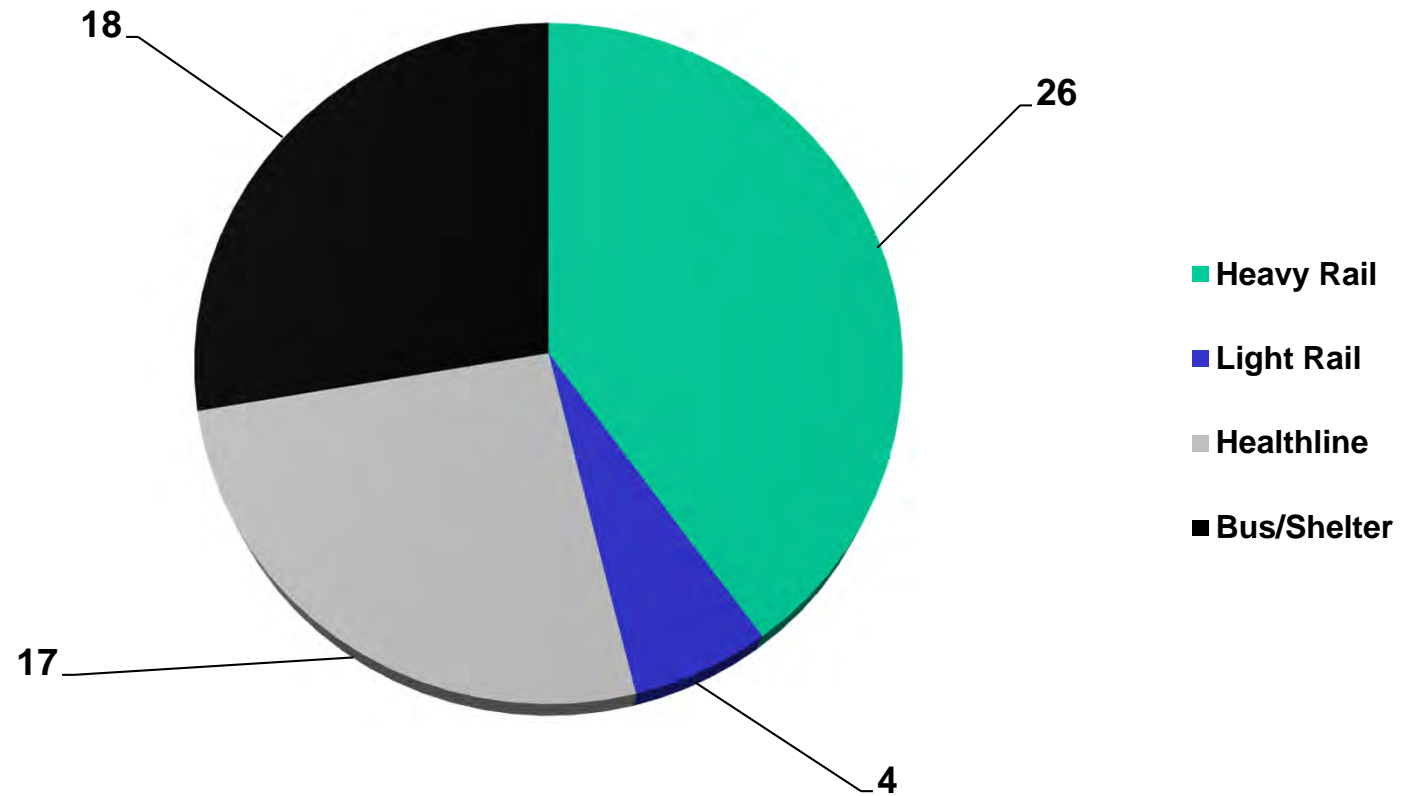


# Electronic Devices by Time of Day





# 2014 Electronic Devices by Location





# Electronic Device Officer Handout

## Be Smart with Your Smart Phone

Nationwide, thefts of mobile phones and other electronic devices are on the rise. We are sharing the following tips to keep you safe and your phone and other devices secure.

### Safety Tips:

- Always be aware of your surroundings.
- Avoid the attention of would be thieves, use your Smart Phone discreetly
- “Grab and Run” is a popular robbery technique. Avoid using your phone or electronic device near bus or train doors, during station stops or exiting the station.
- Don’t lend your phone to strangers

### Take precautions:

- Register your phone or device
- Keep a detailed description of your phone or device including serial number, color, and model number.
- Consider installing anti-theft or tracking software.
- Password protect your device.
- Never sleep on a train or bus

### Numbers to Note:

#### Non Emergency:

Text or Call your tip to:  
(216) 575-3937 (EYES)

#### Emergencies:

Call 911 or (216) 566-5163





# Operator Assaults

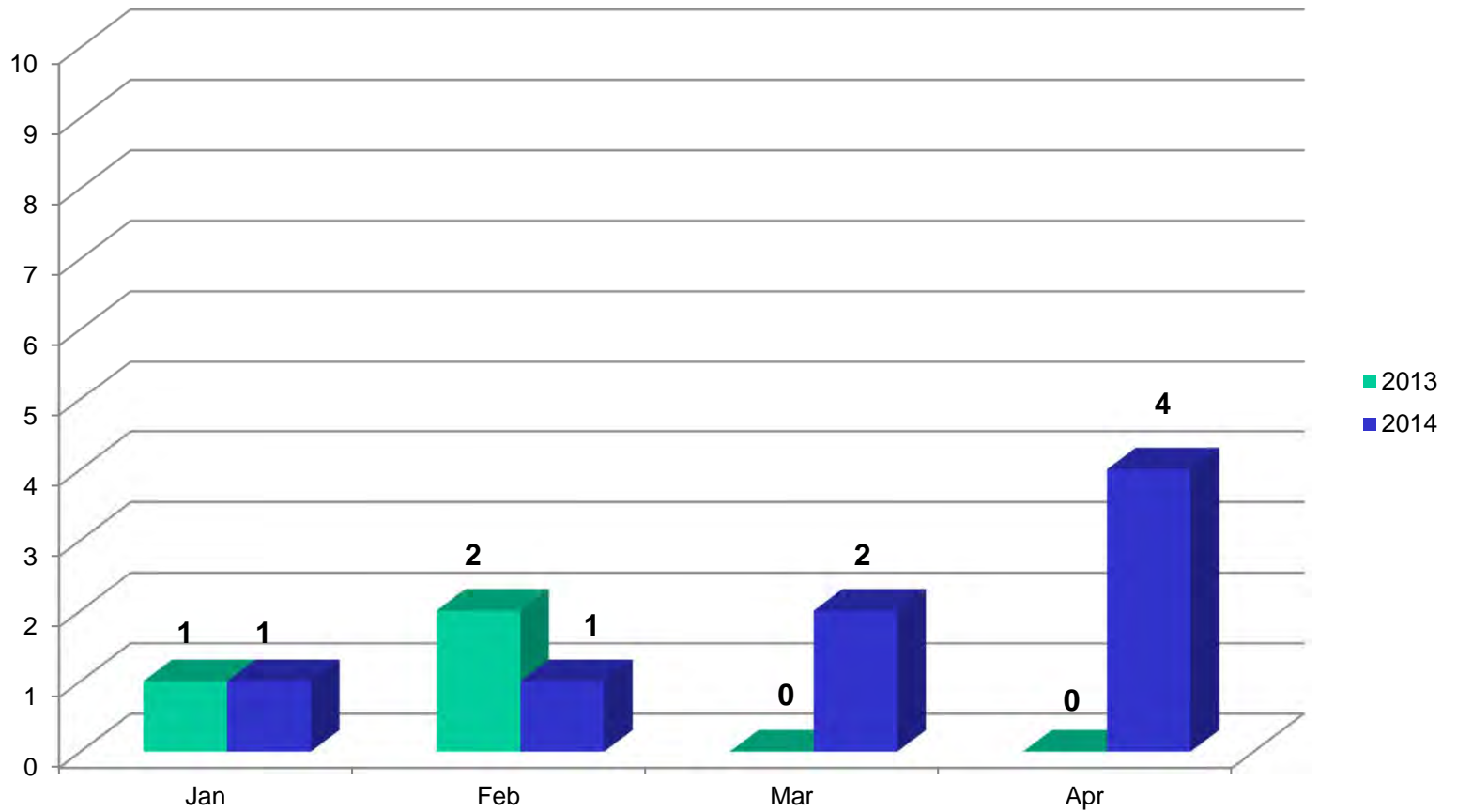
---

Ohio Revised Code 2903.13 Assault.

- (A) No person shall knowingly cause or attempt to cause physical harm to another or to another's unborn.



# Operator Assaults







# TCRP

## SYNTHESIS 93

### Practices to Protect Bus Operators from Passenger Assault



*A Synthesis of Transit Practice*

TRANSPORTATION RESEARCH BOARD  
OF THE NATIONAL ACADEMIES

TRANSIT  
COOPERATIVE  
RESEARCH  
PROGRAM

Sponsored by  
the Federal  
Transit Administration





# TCRP Survey Primary Contributing Factors

---

- Fare Enforcement
- Intoxication
- Drug use
- Other Rule Enforcement
- Juvenile Disorder
- Mental Illness





# GCRTA Countermeasures

---

- Signage/Video Surveillance
- Operator De-escalation Training
- Officer Presence and Patrols
- MGT/ATU/FOP Collaborative Efforts
- iWatch Tip Hotline
  - 178 tips from Jan – Apr 2014
    - 46 phone calls
    - 132 text messages





# Operator Survey Analysis

---

Although operator assaults are infrequent, all agree that one is too many.

RTA and its operators tested two types of enclosures:

- Swinging Door Enclosure
- Sliding Door Enclosure



# Swinging Design Key Results

---

- 42% - not comfortable operating the bus with enclosure
- 81% - feel either caged in or suffer from glare
- 65% - feel more in control without this enclosure
- 56% - enclosure affects their interaction with customers
- 45% - their range of vision is affected by the enclosure



## Sliding Design Key Results

---

- 67% - not comfortable operating the bus with this enclosure
- 58% - feel either caged in or suffer from glare
- 71% - feel more in control without this enclosure
- 67% - enclosure impacts their interaction with customers
- 71% - their range of vision is affected by the enclosure



## Recommendation

---

Operators are not in support of either design

Although both designs provide some protection, it is at the expense of:

- customer service/interaction
- range of vision
- operator comfort
- overall control of the vehicle



# Comments or Questions?

---

